



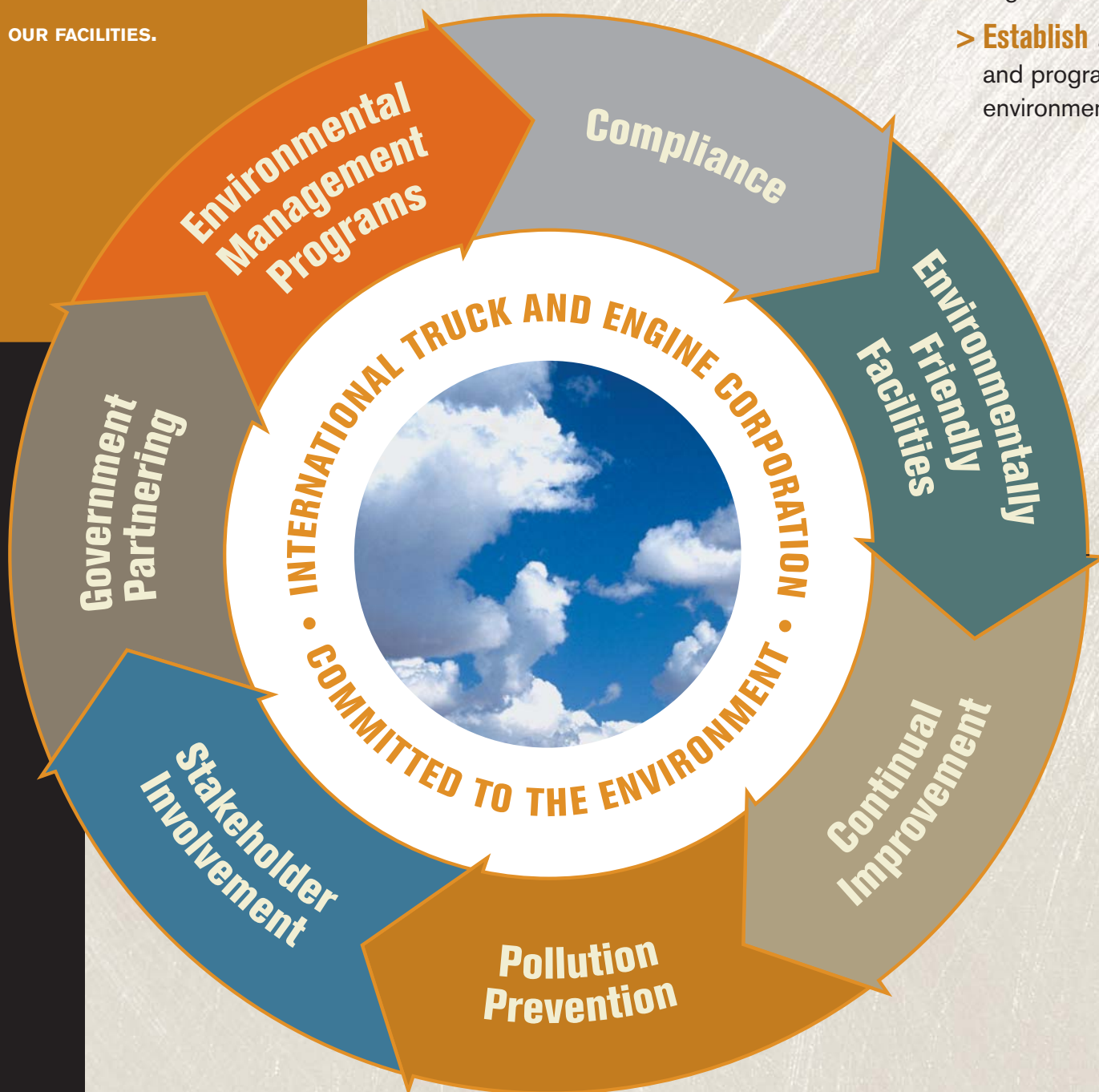
# Environmental PROTECTION POLICY

INTERNATIONAL TRUCK AND ENGINE CORPORATION

INTERNATIONAL IS COMMITTED TO ADHERING TO HIGH STANDARDS OF ENVIRONMENTAL QUALITY, TO PRINCIPLES OF SUSTAINABLE DEVELOPMENT AND TO PROVIDING A WORKPLACE THAT PROTECTS OUR EMPLOYEES AND THE COMMUNITIES SURROUNDING OUR FACILITIES.

To carry out these commitments, in a technically sound and cost-effective manner, it is the policy of International to:

- > **Conduct** all operations in compliance with applicable environmental requirements.
- > **Design**, construct and operate our facilities in a manner that protects our employees, individuals in the neighboring communities and the environment.
- > **Implement** programs for self-monitoring, assessing and reporting to ensure compliance and continual improvement in the pursuit of environmental goals.
- > **Exercise** innovation in optimizing product life-cycle design in our manufacturing processes and our end products to maximize recycling and minimize or prevent the generation of waste and the discharge of contaminants into the environment.
- > **Ensure**, through management support and education, that employees, suppliers, and customers understand and accept responsibility for incorporating environmental quality in their conduct of business.
- > **Work** with all levels of government toward the development and implementation of equitable and effective environmental laws, rules, regulations and policies.
- > **Establish** and maintain operating procedures and programs to implement our corporate environmental protection policy.



**JOHN HORNE**  
Chairman, and Chief Executive Officer  
International Truck and Engine Corporation

**ROBERT C. LANNERT**  
Vice Chairman and Chief Financial Officer  
International Truck and Engine Corporation

**DAN C. USTIAN**  
President and Chief Operating Officer  
International Truck and Engine Corporation